

What techniques can we use to create paintings in the style of Georgia O'Keeffe?

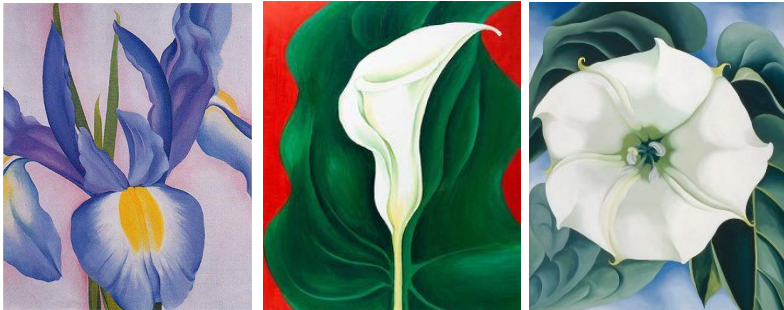
Key questions:

- Who was Georgia O'Keeffe?
- What are key features of Georgia O'Keeffe's work?
- How can we develop tone in painting and drawing?
- How can we change and adjust colour?
- What techniques are used in painting and drawing?

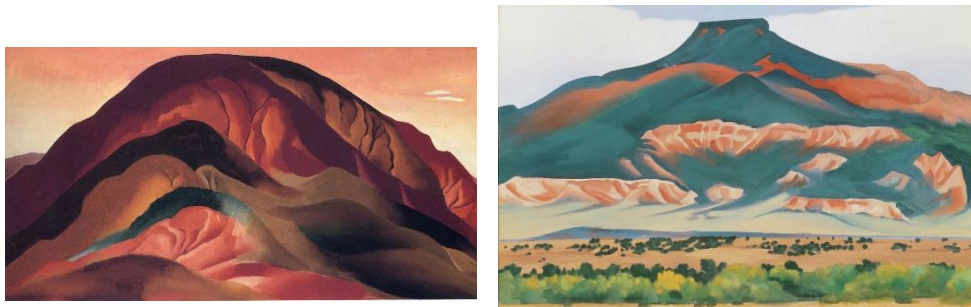
**Georgia O'Keeffe (1887 – 1986) – American painter**

**Her style:** Vibrant, bold, abstract, unusual perspectives.

Flowers



Landscapes



**Key Vocabulary:**

|                                 |  |
|---------------------------------|--|
| <b>Observational drawing</b>    | Drawing or painting from real-life observation.  |
| <b>Painting</b>                 | The practice of applying paint or other media to a surface, usually with a brush.  |
| <b>Perspective / view point</b> | The position from where you view your scene.   |
| <b>Pressure</b>                 | The variation in how hard a pencil is pressed to paper to create dark/light shades.  |
| <b>Shade</b>                    | To add black to a colour to darken it.   |
| <b>Sketch</b>                   | Refers to a quick, informal drawing, that is typically done from life.   |
| <b>Tone</b>                     | Describes the quality of color. It has to do with whether a color is perceived as warm or cold, bright or dull, light or dark. The tone of a piece of art can have a variety of effects, from setting the mood to adding emphasis. |
| <b>Water colour</b>             | Watercolour or watercolour, also aquarelle, is a painting method in which the paints are made of pigments suspended in a water-based solution. Watercolour refers to both the medium and the resulting artwork.                    |

**Key skills:**

- Developing dark and light tones when using pencil and paint.
- Colour mixing.
- Observational drawing.
- Exploring different perspectives of the same object.